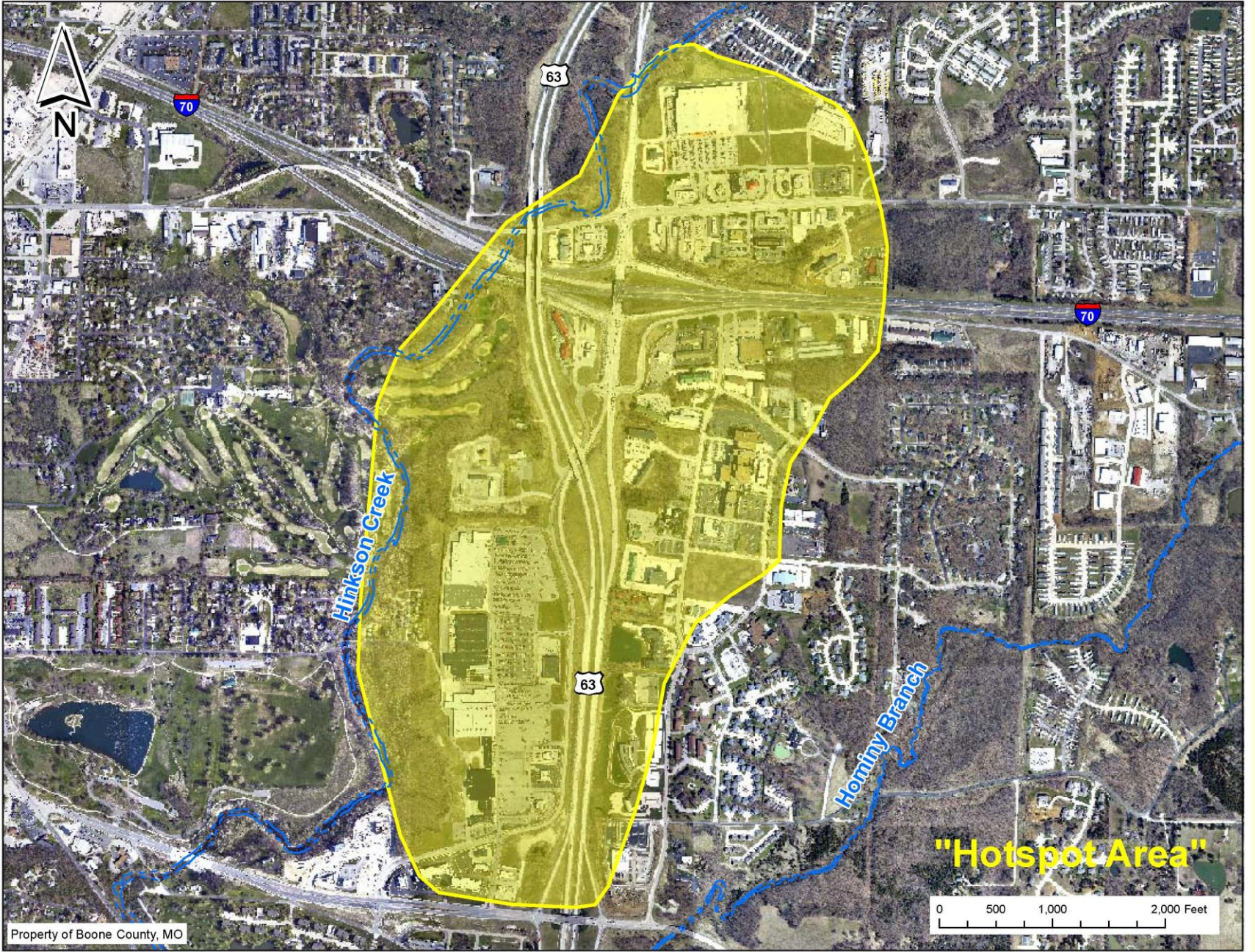
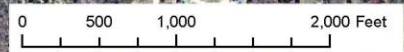


Boone County  
Hinkson Creek Watershed  
Restoration Project Phase 2  
319 Grant  
Hot-Spot Analysis



**"Hotspot Area"**



Property of Boone County, MO



Property of Boone County, MO

0 500 1,000 2,000 Feet

"Hotspot Locations"

Hinkson Creek

Horniny Branch

63

70

70

63

7

8

9

20

14

15

16

10

6

1

11

12

19

17

18

2

13

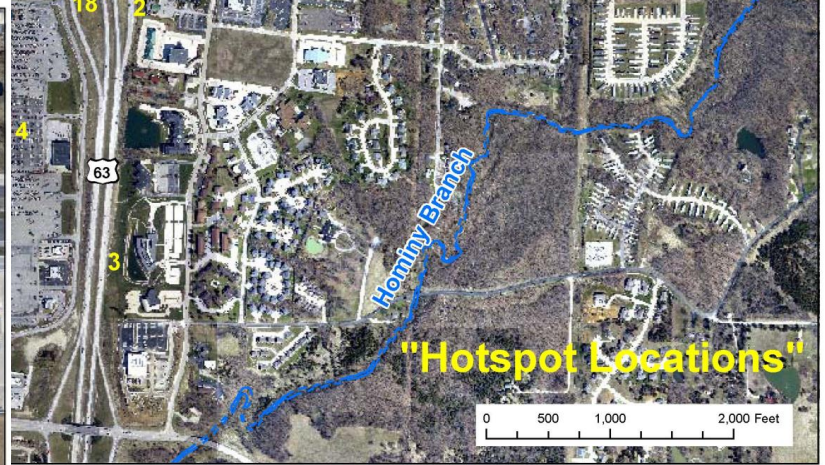
4

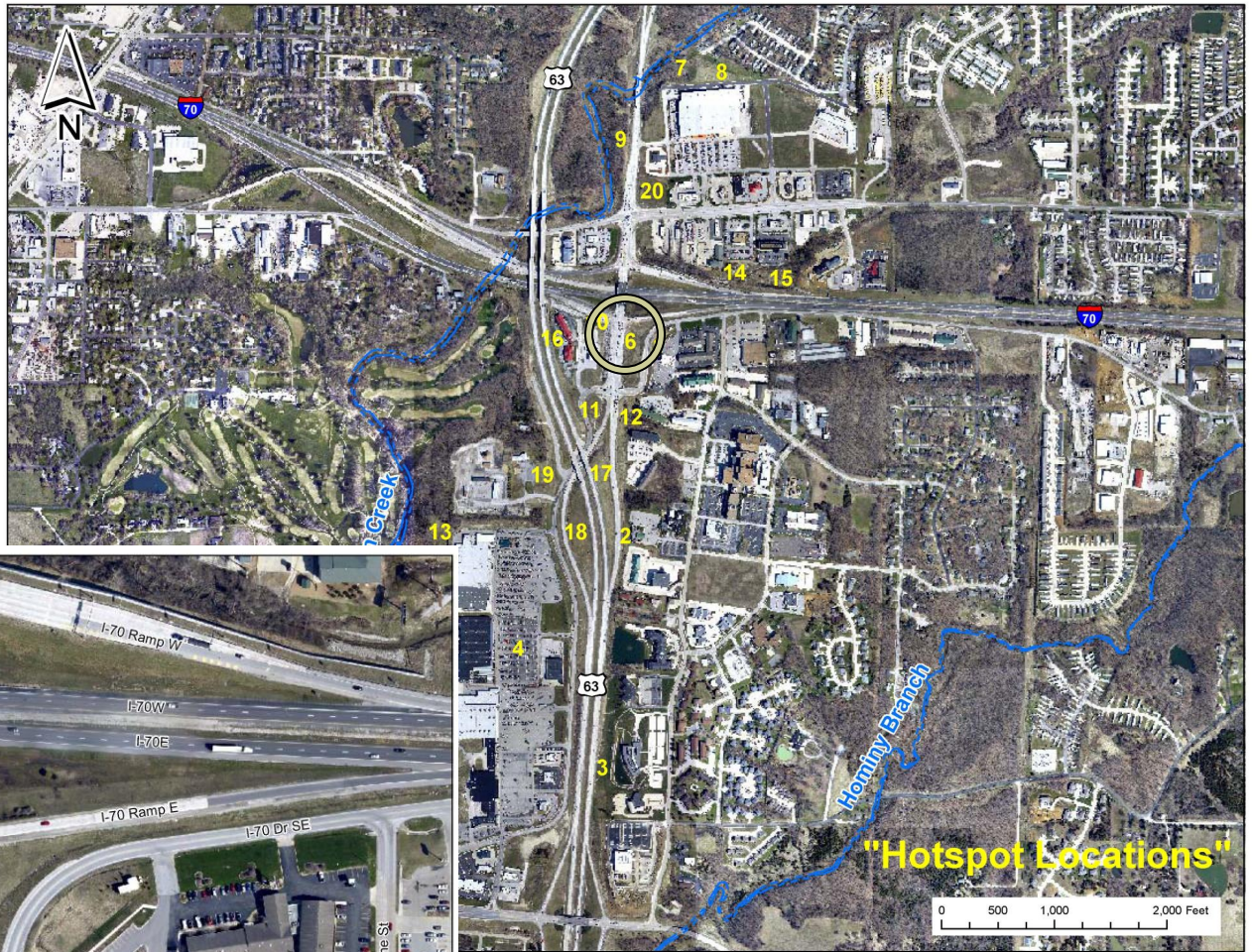
3

5

# Hotspot Area

- **Delineated by Missouri DNR and the Hinkson Grant**
  - **Based on early results of Hinkson studies showing problems between I-70 and Broadway**
- **Approx. 355 acres (1.7% of TMDL WLA area)**
- **20 Potential Sites Identified by Study**
- **Treatments focus on 1/2" to 1" rain events**
- **By Consultant's Estimate (A Civil Group):**
  - **Reduction in 1yr flow leaving Hot Spot Area: 40%**
  - **Total cost for all sites: \$1.1 Million**





Property of Boone County, MO

