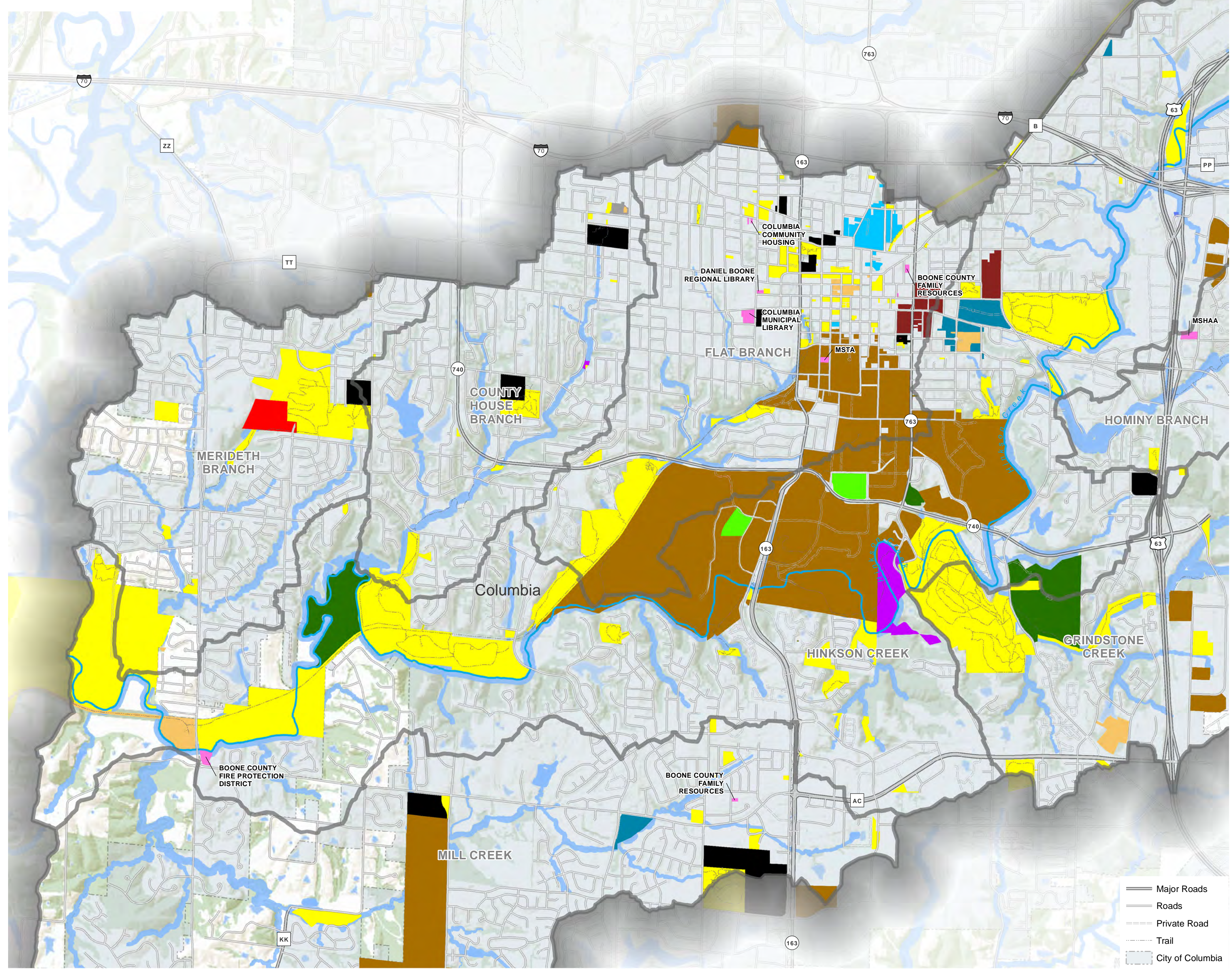




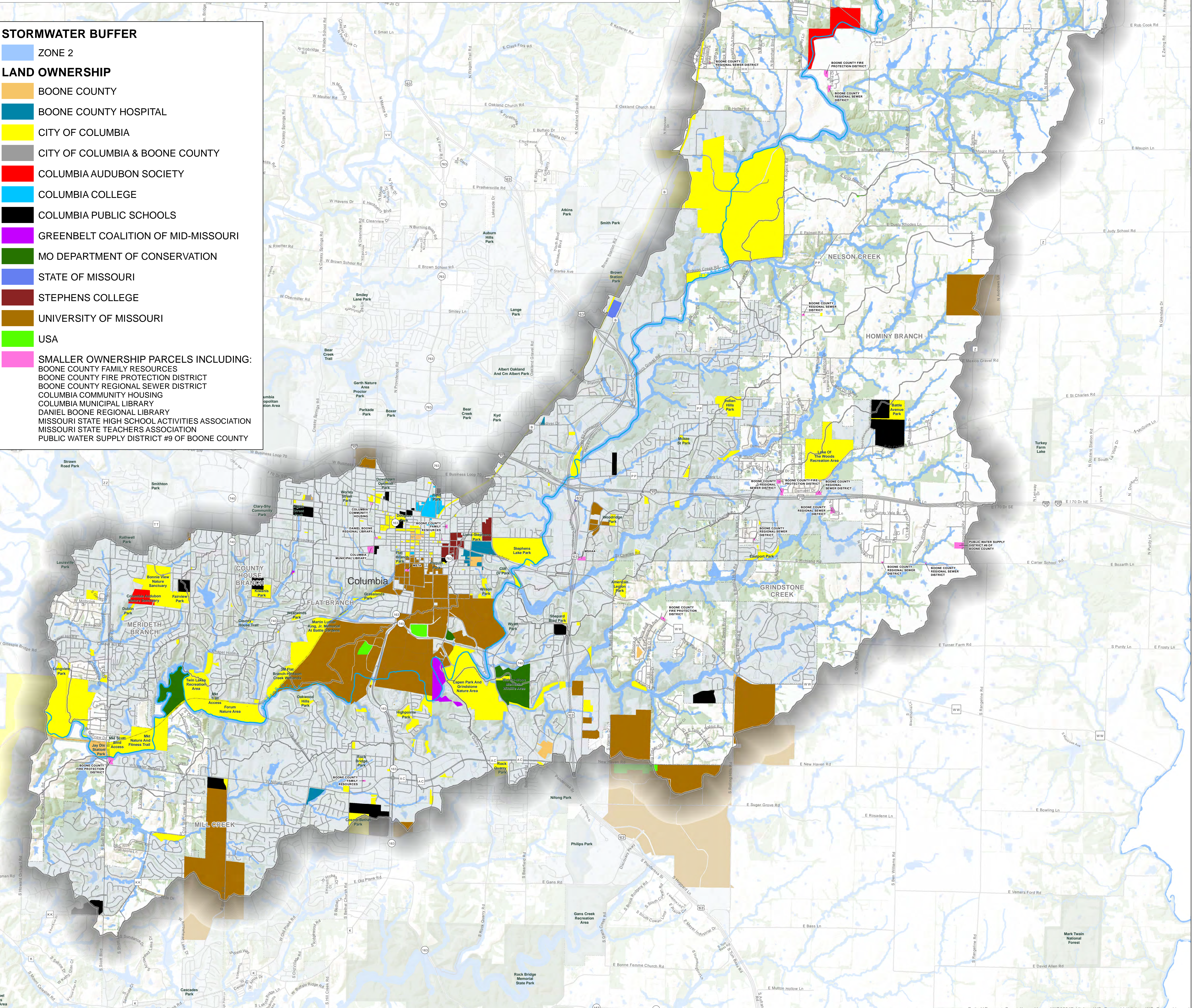
# Hinkson Creek Watershed

## CITY OF COLUMBIA INSET



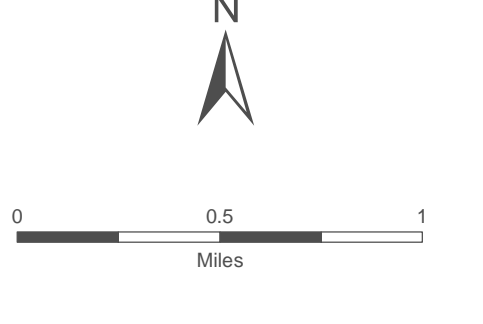
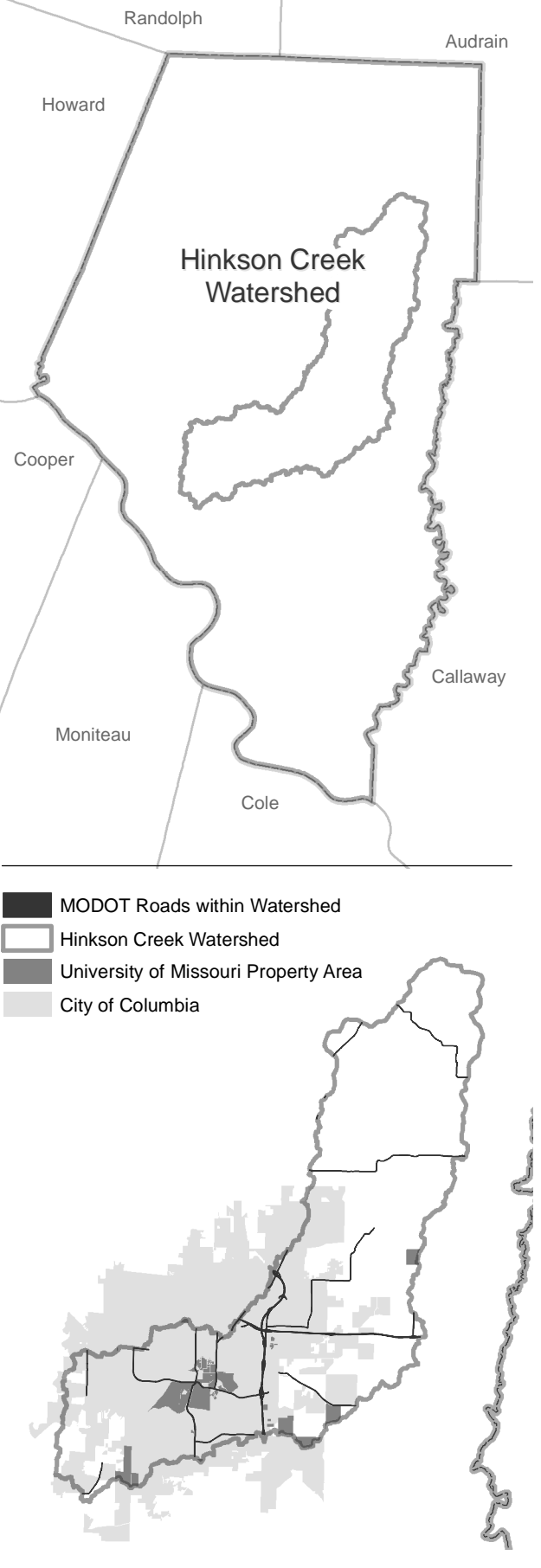
### STORMWATER BUFFER

- ZONE 2
- LAND OWNERSHIP**
- BOONE COUNTY
- BOONE COUNTY HOSPITAL
- CITY OF COLUMBIA
- CITY OF COLUMBIA & BOONE COUNTY
- COLUMBIA AUDUBON SOCIETY
- COLUMBIA COLLEGE
- COLUMBIA PUBLIC SCHOOLS
- GREENBELT COALITION OF MID-MISSOURI
- MO DEPARTMENT OF CONSERVATION
- STATE OF MISSOURI
- STEPHENS COLLEGE
- UNIVERSITY OF MISSOURI
- USA
- SMALLER OWNERSHIP PARCELS INCLUDING:**
- BOONE COUNTY FAMILY RESOURCES
- BOONE COUNTY FIRE PROTECTION DISTRICT
- BOONE COUNTY REGIONAL SEWER DISTRICT
- COLUMBIA COMMUNITY HOUSING
- COLUMBIA MUNICIPAL LIBRARY
- DANIEL BOONE REGIONAL LIBRARY
- MISSOURI STATE HIGH SCHOOL ACTIVITIES ASSOCIATION
- MISSOURI STATE TEACHERS ASSOCIATION
- PUBLIC WATER SUPPLY DISTRICT #9 OF BOONE COUNTY



- Hinkson Creek
- Major Roads
- Local Roads
- Private Roads and Walkway
- Access Roads
- Trails
- City Boundary
- Hinkson Creek Watershed
- Lake, Pond, or Reservoir
- Rivers, Streams, or Creeks

### Boone County, Missouri



Date: 10/11/2016

**NOTES:**  
All ownership areas were derived from the Boone County Assessor's Parcel Polygon database, based on designated owner.

**Assessor Dataset Disclaimer:**  
These maps were prepared for the inventory of real property based on the utilization of deeds, plans, and/or supportive data. In addition, map files are frequently changed to reflect changes in boundaries, lot lines, and other geographic features resulting from changes in ownership, development, and other causes. The existence, dimension, and location of features, as well as other information, should not be relied upon for any purpose without actual field verification. The County of Boone makes no warranty of any kind concerning the completeness or accuracy of information contained on these maps and assumes no liability or responsibility for the use or reuse of these maps by persons not affiliated with Boone County. Use of these maps by any person not affiliated with Boone County constitutes agreement by the user to assume full liability and responsibility for the verification of the accuracy of information shown on these maps.

**Sources Citation:**  
Boone County Assessor-2009 Structures Source  
Parcel Polygon Source  
City Polygon Source  
County Polygon Source  
Boone County Resource Management- Hinkson Watershed Impervious Surfaces Polygon Source  
Boone County GIS- Surrounding County Polygon Source  
Boone County/ City of Columbia- Roads Centerline Line Source  
Boone County Assessor/ City of Columbia Public Works- 2009 Hydrology Drain Line Source  
2009 Hydrology Watershed Polygon Source  
2015 Elevation Data  
City of Columbia Public Works- Hinkson Creek Sites Point Source  
2011 Structures Polygon Source  
Hinkson Creek Watershed Impervious Surfaces

**Developed By:**  
Boone County GIS Department  
301 E. Walnut, Room 220  
Columbia, MO 65201-4890  
Phone: (573) 886-4325  
Fax: (573) 886-4322  
www.showmeboone.com